



DC Blowers

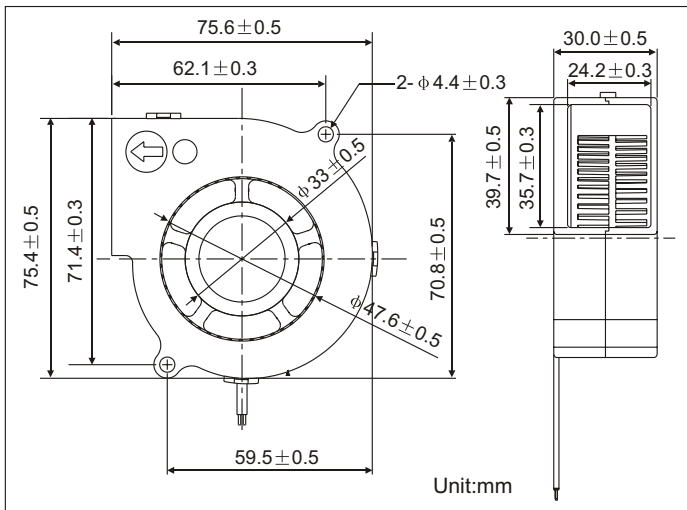


YB7530X12L(M)(H) YB7530X24L(M)(H)

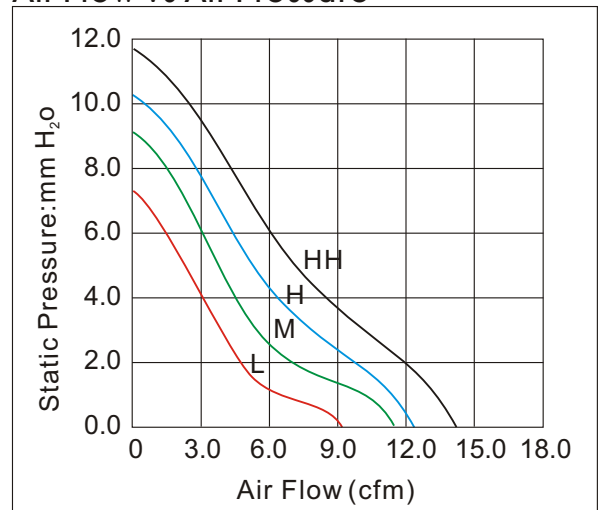
Features

Size: 75×75×30mm(2.95×2.95×1.18in)
 Frame/Impeller: Reinforced Plastic UL94V-0
 Bearings: Ball Bearing&Sleeve Bearing
 Life Expectancy:50,000 Hours at 20°C-Ball
 30,000 Hours at 20°C-Sleeve
 Approvals: UL CUL TUV CE RoHS
 Weight: 85g



 E318377 CE TUV AE50078978
 ▪ RoHS Compliant



Air Flow vs Air Pressure



Performance

Model	Bearing System X			Rated Voltage (V)	Current (A)	Input Power (W)	Nominal Speed (R.P.M)	Air Flow (CFM)	Air Pressure (mm-H ₂ O)	Noise (dBA)
	S	B	D							
YB7530X12L	✓	✓	✓	12	0.15	1.80	2500	9.18	7.55	33
YB7530X12M	✓	✓	✓	12	0.20	2.40	3000	11.23	9.05	38
YB7530X12H	✓	✓	✓	12	0.25	3.00	3500	12.55	10.03	42
YB7530X12HH	✓	✓	✓	12	0.35	4.20	4000	14.58	11.95	45
YB7530X24L	✓	✓	✓	24	0.10	2.40	2500	9.18	7.55	33
YB7530X24M	✓	✓	✓	24	0.12	2.88	3000	11.23	9.05	38
YB7530X24H	✓	✓	✓	24	0.15	3.60	3500	12.55	10.03	42
YB7530X24HH	✓	✓	✓	24	0.20	4.80	4000	14.58	11.95	45